



COMmunity-based Management of Environmental challenges in Latin America

Science for the Environment 2013. Aarhus

Linking Knowledge to Action in Environmental Challenges Management. Learning from COMET-LA



M. Mar DELGADO-SERRANO. University of Cordoba (ES)



Project Coordinator

Pepa AMBROSIO. University of Cordoba (ES)



Alice NEWTON. NILU (NO)



This research has been financed by the Seventh Framework Programme of the European Commission in the frame of the Project "Community based management of environmental challenges in Latin America" (FP7-ENV2011-282845 COMET-LA)





COmmunity-based Management of EnvironmenTAl challenges in Latin America

OUTLINE

- Need of new models
- Knowledge & Communication
- Fostering Actions
- COMET-LA Approach
- Research needs to foster Actions



COmmunity-based Management of EnvironmenTAl challenges in Latin America

NEED OF NEW MODELS



DELGADO-SERRANO

NEED OF NEW MODELS

UNSUSTAINABLE
NATURAL RESOURCE
MANAGEMENT MODELS

SOCIETAL
TRANSFORMATIONS

SUSTAINABLE LOW
CARBON GLOBAL
SOCIETIES

Increasing K on physical and natural aspects of NRM, CC

Less K about social aspects

Multi-scale character of problems

Inherent uncertainties about the future

Disjunctive perspectives among those involved



COmmunity-based Management of
EnvironmenTAl challenges in Latin America

NEED OF NEW MODELS

ENVIRONMENTAL CHALLENGES
ARE
SOCIAL CHALLENGES

NEED OF NEW MODELS

SCIENCE INCREASE CERTAINTY ABOUT HUMAN
INFLUENCE ON GLOBAL CHANGE



BUT SOCIETY
DO NOT!!!

TUNING?

- Social Perception of Risk
 - Distance (space and time)
 - Familiarity with risk
 - Ideological and cultural aspects
 - Quality of information
 - Inadequate learning and retention processes
 - Limited pool of worry



COmmunity-based Management of Environmental challenges in Latin America

KNOWLEDGE AND COMMUNICATON



DELGADO-SERRANO



USABLE KNOWLEDGE?

Clear definition of objectives, purpose, scope, audience, boundaries

Different needs at the global, national, local levels
Different stakeholders/different approaches
Lack of understanding and exchange among K actors
Multitude of overlapping studies, analysis, assessments...



How to meet different needs at different levels?
How to combine stakeholders and approaches?
How to develop exchange mechanisms among K actors?
How to coordinate research and research actors?

COMMUNICATION BARRIERS

- **SCIENCE-SOCIETY**
 - Source of Knowledge
 - Contradictory information
 - Language (predominance of English)
 - Scientific jargon
 - Abstract concepts
 - Usefulness (adapted to society needs?)

COMMUNICATION BARRIERS

- **SCIENCE-POLICY**

- Policy timeline
- Reactive policies vs planning and proactive policies
- Uncertainty (politicians need certainties)
- Uncomfort with scientists



COmmunity-based Management of EnvironmenTAl challenges in Latin America

FOSTERING ACTIONS



DELGADO-SERRANO



ACTIONS IN SCIENCE

- Iterative science
- Usable knowledge
 - Salience
 - Legitimate
 - Credible
- Reader approach
 - Understandable science and terminology



**COmmunity-based Management of
EnvironmenTAl challenges in Latin America**

ACTIONS IN POLICY MAKING

- From policy relevance to policy prescription
- From priority problems to priority actions
- Long term perspective
- Assessment of (science and policy) outcomes



COMmunity-based Management of Environmental challenges in Latin America

COMET-LA Community-Based Management of Environmental Challenges in Latin America



DELGADO-SERRANO

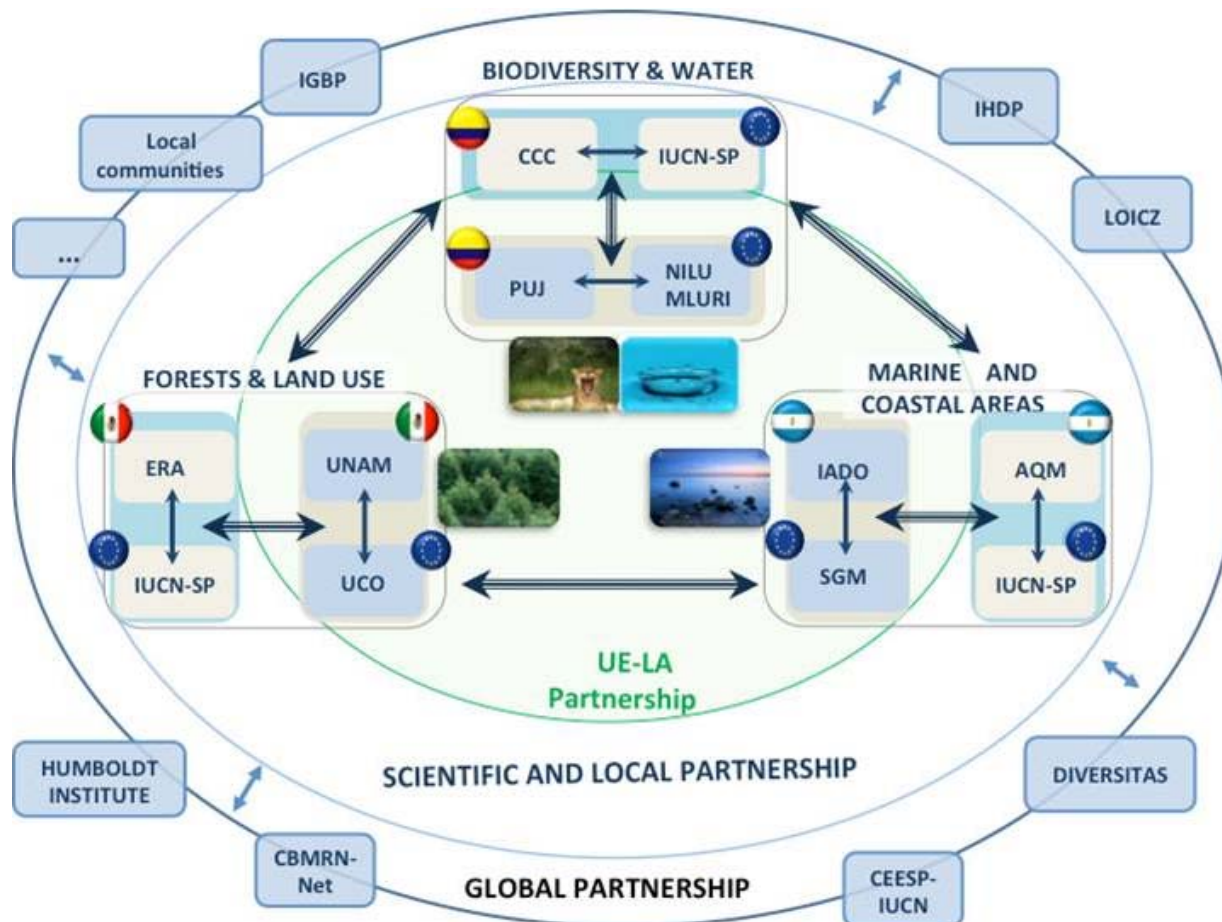


COMET-LA Learning arena

- A place to integrate **local** and **scientific** knowledge in the management of natural resources.
- **Twin-objectives:**
 - Scientists support local management by targeting their research and provide managers and local communities with **understandable** and **useful** information to take decisions
 - **Local knowledge** and **good practices** on sustainable community-based models are integrated in the management of environmental and climate changes.

Join locally-owned knowledge with scientifically-supported methods to facilitate progress toward sustainable management of natural resources

COMET-LA Learning arena



Integrating local & scientific knowledge

- Factors affecting Knowledge integration:
 - Differences in **vision**
 - Differences in **power**
 - Perceptions on the **benefits** of the project
- **Knowledge accurate** and **trusted** for both
- Avoid **intellectual theft** (locals don't benefit from knowledge integration)

Integrating local & scientific knowledge

- From “**exploitation visions**” to “**collaboration visions**”
- Identify **views** and **perceptions** of different stakeholders
- **Avoid scientific predominance:** Awareness of philosophical and epistemological positions of each group. **No knowledge privileged**
- **Bi-directional** exchange
- It is a **process**, not an **act**



**COmmunity-based Management of
EnvironmenTal challenges in Latin America**

COMET-LA K Creation

Locally-adapted methods for:

1. Characterization of Socio Ecological Systems
2. Identification of current and future key variables using Prospective Analysis techniques
3. Building of Scenarios for future changes and challenges.



COmmunity-based Management of
EnvironmenTAl challenges in Latin America

COMET-LA Fostering Actions

- **Knowledge** has to be:
 - Salient (are people worried by the environmental challenges we address?)
 - Credible (do we trust each other as K providers?)
 - Legitimate (are all important (not only the powerful) stakeholders on board?)
- ... to **foster Actions**

COMET-LA Fostering Actions

- Locally-adapted methodologies





COMET-LA Fostering Actions

- Capacity-building strategies
 - Co-researchers
 - Commoners commissioned
- Integrating traditional practices with new K
- Involvement in designing the future (prospective and scenarios)
- Catalyser of dynamics





COmmunity-based Management of EnvironmenTAl challenges in Latin America

RESEARCH NEEDS TO FOSTER ACTIONS



DELGADO-SERRANO

RESEARCH NEEDS TO FOSTER ACTIONS

- **From science to society**
 - Concepts and methods:
 - For multi-scale K development
 - To deal with uncertainties
 - To handle diverging views in productive ways
 - To focus K production to society needs
 - To deliver understandable and useful K



RESEARCH NEEDS TO FOSTER ACTIONS

- **From science to policy**
 - Options for action and outcomes of actions
 - Methods to work in direct relation with policy users
 - Assessment of (science and policy) outcomes



**COmmunity-based Management of
EnvironmenTal challenges in Latin America**

THANKS FOR YOUR ATTENTION

mmdelgado@uco.es

www.comet-la.eu



M^a del Mar DELGADO-SERRANO